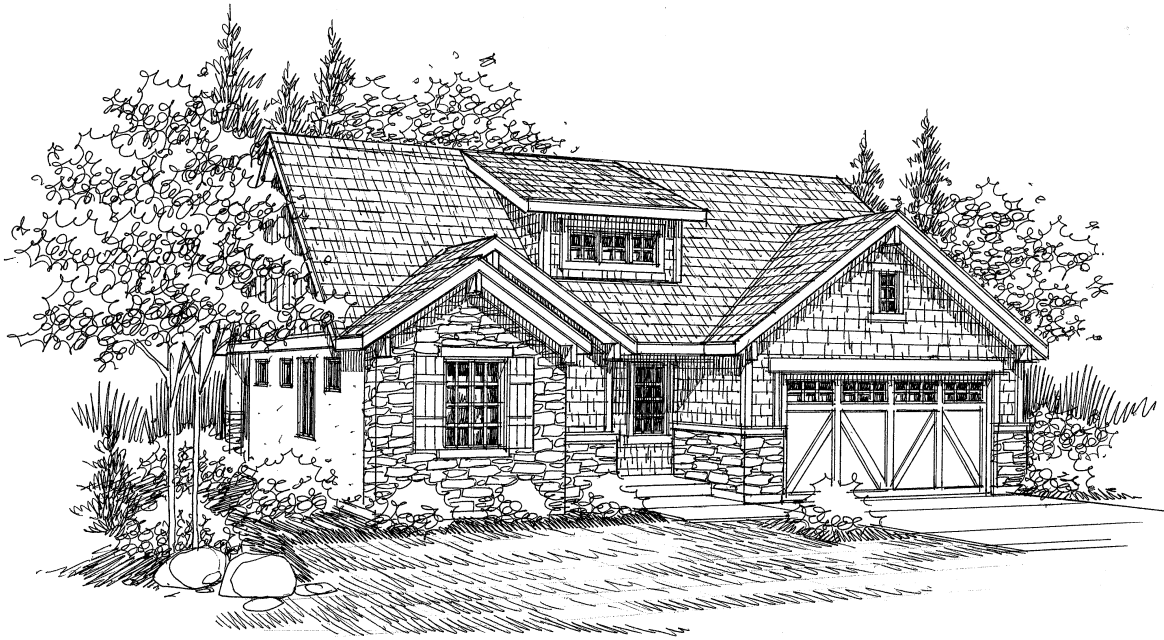
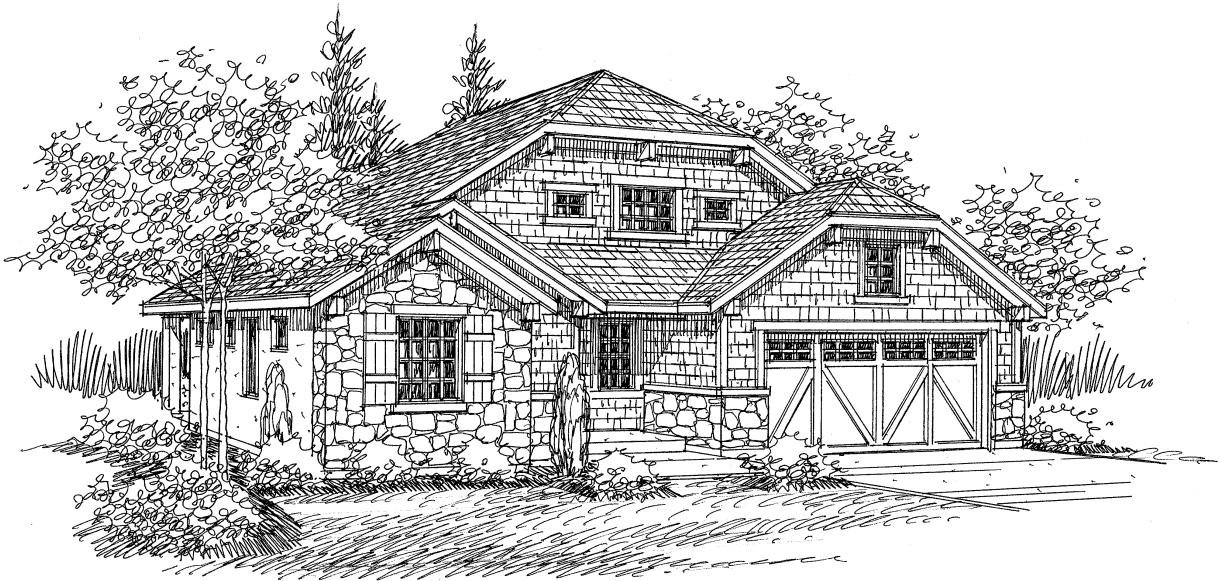


# The Carmel Plan



Elevation A



Elevation B

John Phillips, *Principal Broker*  
Phillips Real Estate 801-755-8200

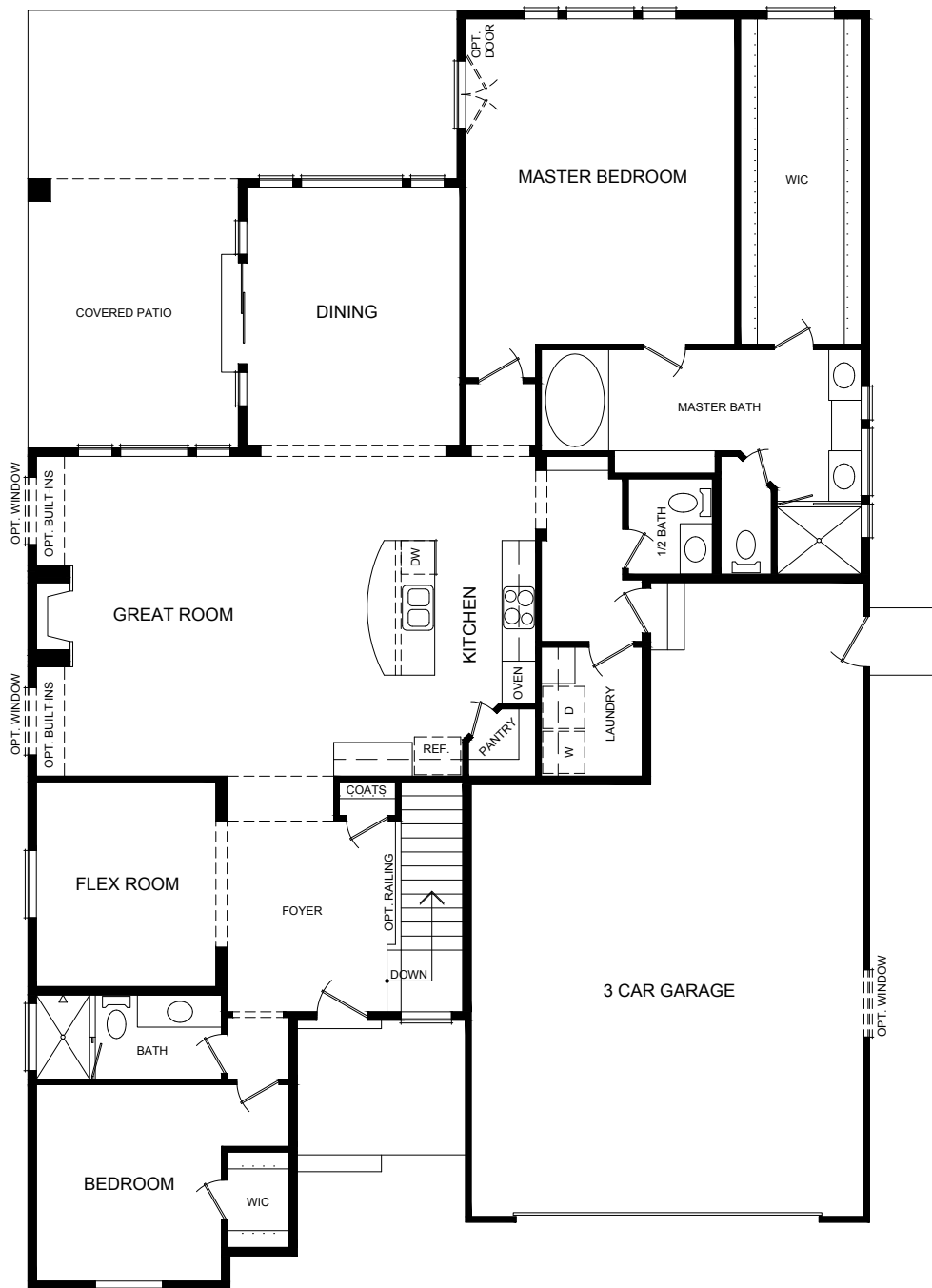


*Phillips*  
HOMES

Actual floor plans and elevations may differ from those shown based on modifications, options, and improvements to the plans by the builder. Phillips Homes 2014©

WWW.PHILLIPSHOMES.COM

# The Carmel Plan



## SQUARE FEET

Main Floor	2,306
Patial Bsmt	1,357

---

TOTAL SF	3,663
----------	-------

## FEATURES

- 3-car Garage
- 2 or 3 Bedrooms
- 2 ½ Baths
- Upgraded finishes
- Built-ins
- Full landscaping & fencing
- 1-year Limited Warranty
- Options & customization
- And much more!

John Phillips, *Principal Broker*

Phillips Real Estate 801-755-8200



*Phillips*  
HOMES

Actual floor plans and elevations may differ from those shown based on modifications, options, and improvements to the plans by the builder. Phillips Homes 2014©

WWW.PHILLIPSHOMES.COM